

**Snohomish County Assessor's Office**

---

**Mass Appraisal Report**

**Residential Neighborhood: Skykomish River Basin Ag-10 Land**

**Appraisal Date: January 1, 2009**

---



**Summary**

---

**Appraisal Date:** January 1, 2009  
**Assessment Year/Tax Year:** 2009 Assessment / 2010 Tax  
**Last Physical Inspection:** 2004 Assessment / 2005 Tax  
**Prior Appraisal Date:** January 1, 2008  
**Prior Assessment Year/Tax Year:** 2008 Assessment / 2009 Tax

---

**Appraisal Area (Neighborhood):** 4191000

---

**Parcels Appraised:** 620

---

**Summary Of Value Change:**

	<b>2008</b>	<b>2009</b>	<b>Value Change</b>	<b>% Change</b>
<b>Land:</b>	60,360,000	56,472,700	-3,887,300	-6.4%
<b>Improvements:</b>	53,456,400	45,187,100	-8,269,300	-15.5%
<b>Total:</b>	113,816,400	101,659,800	-12,156,600	-10.7%

**Snohomish County Assessor's Office**

---

**Mass Appraisal Report**

**Residential Neighborhood: Skykomish River Basin Ag-10 Land**

**Appraisal Date: January 1, 2009**

---



**Summary**

**Appraisal Level and Uniformity**

**Study Period: January 1 through December 31, 2008**

**Number of Sales: 6**

---

	<b>2008</b>	<b>2009</b>	<b>Change</b>	<b>% Change</b>
<b>Median Ratio:</b>	0.7798	0.8452	0.0654	8.4%
<b>Mean Ratio:</b>	0.8425	0.8511	0.0086	1.0%
<b>Weighted Mean:</b>	0.8166	0.8495	0.0329	4.0%
<b>PRD:</b>	1.0317	1.0018	-0.0299	-2.9%
<b>COD:</b>	0.1885	0.0186	-0.1698	-90.1%

---

**Data Sources:** All data in this report summarized from pre-certification Residential Characteristics extract and Abstract Report dated: **05/02/2009**

---

**Snohomish County Assessor's Office**

**Mass Appraisal Report**

**Residential Neighborhood: Skykomish River Basin Ag-10 Land**

**Appraisal Date: January 1, 2009**



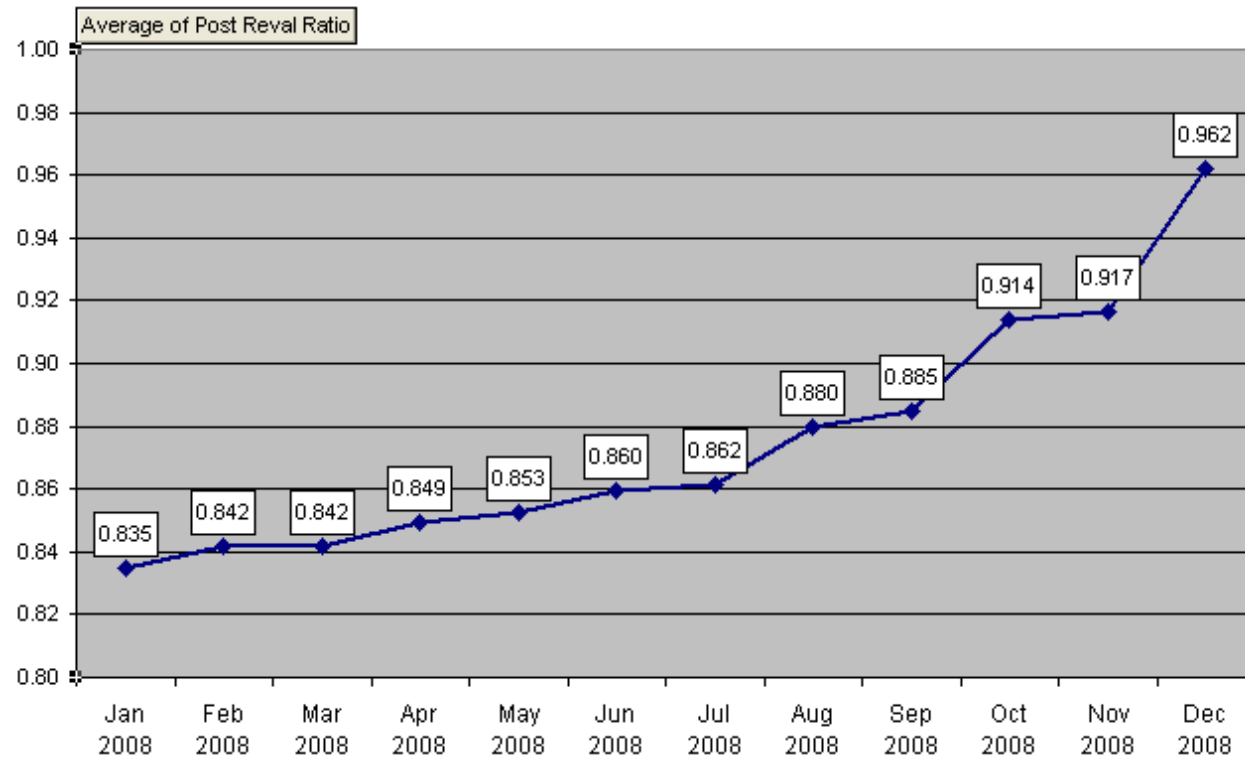
**Summary**

**Ratio of Assessed Value**

**To Sales Price over Time**

**Avg Ratio of 2009 Assessed Values to 2008 Sales Prices  
For Single Family Residences  
In Snohomish County**

**NOTE: Rising ratios indicate  
declining sales prices**



**Snohomish County Assessor's Office**

**Mass Appraisal Report**

**Residential Neighborhood: Skykomish River Basin Ag-10 Land**

**Appraisal Date: January 1, 2009**

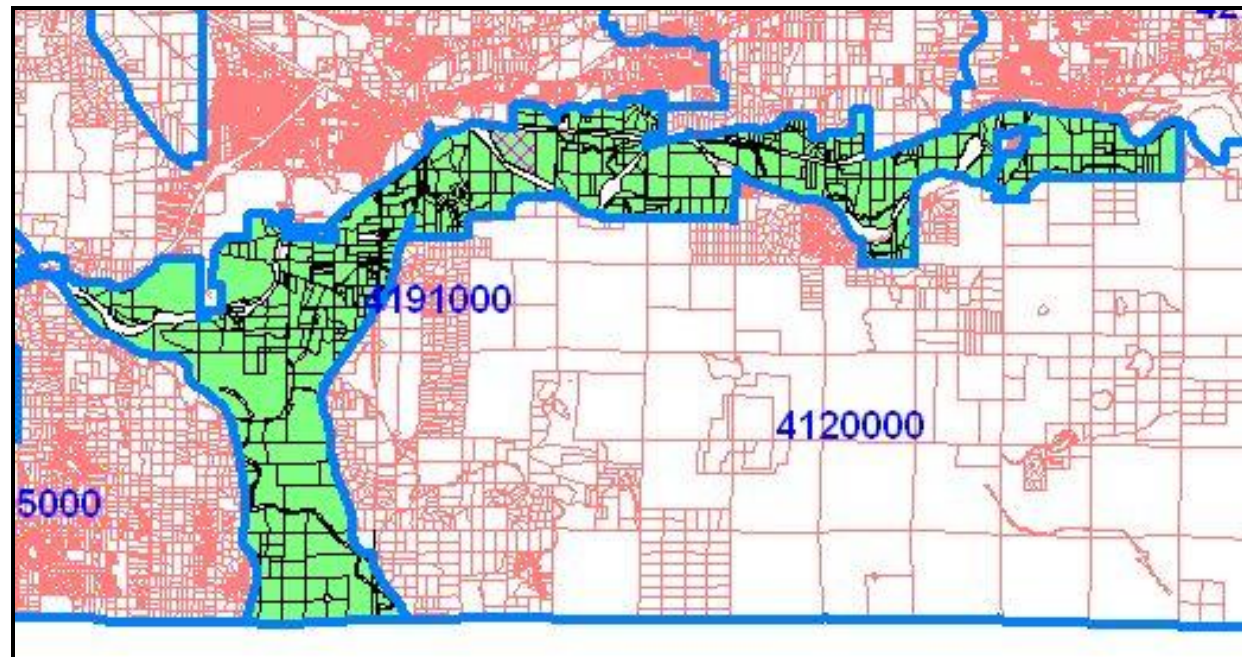


**Appraisal Area**

**Neighborhood Boundary**

**And Member Parcels**

- Legend  
**Red:** Parcels  
**Green:** Member Parcels  
**Blue:** Region Boundary



The map above shows the economic region known as Neighborhood 4191000 (AKA BMA 4191000) and its member parcels.

The 'blue' boundary delineates the economic region (neighborhood). Parcels with residential zoning, which lie within the economic region, are denoted in 'green'. Everything else is 'commercial' property which lies within the residential economic region.

**Snohomish County Assessor's Office**

---

**Mass Appraisal Report**

**Residential Neighborhood: Skykomish River Basin Ag-10 Land**

**Appraisal Date: January 1, 2009**

---



**Appraisal Area**

**Neighborhood Description**

Ag-10 zoned farmland within the Skykomish river basin from the mouth to an area southeast of the town of Sultan on the south side of the Skykomish river.

**Snohomish County Assessor's Office**

**Mass Appraisal Report**

**Residential Neighborhood: Skykomish River Basin Ag-10 Land**

**Appraisal Date: January 1, 2009**



**Value Change Summary**

**Value Change Summary  
By Abstract Group**

Property Class	Number of Parcels		2008 Certified Total Value	2009 Calculated Total Value	Value Change	% Change
Agricultural	262	L:	27,931,000	26,597,700	-1,333,300	-4.8%
		B:	18,218,100	15,027,300	-3,190,800	-17.5%
		T:	46,149,100	41,625,000	-4,524,100	-9.8%
Industrial	1	L:	123,600	163,100	39,500	32.0%
		B:	180,000	254,500	74,500	41.4%
		T:	303,600	417,600	114,000	37.5%
Commercial	17	L:	787,200	837,800	50,600	6.4%
		B:	2,034,700	2,034,700	0	0.0%
		T:	2,821,900	2,872,500	50,600	1.8%
Residential	198	L:	25,964,100	24,000,200	-1,963,900	-7.6%
		B:	33,023,600	27,870,600	-5,153,000	-15.6%
		T:	58,987,700	51,870,800	-7,116,900	-12.1%
Multifamily	0	L:	0	0	0	0.0%
		B:	0	0	0	0.0%
		T:	0	0	0	0.0%
Forest	2	L:	0	0	0	0.0%
		B:	0	0	0	0.0%
		T:	0	0	0	0.0%
Other	140	L:	5,554,100	4,873,900	-680,200	-12.2%
		B:	0	0	0	0.0%
		T:	5,554,100	4,873,900	-680,200	-12.2%

**Snohomish County Assessor's Office**

**Mass Appraisal Report**

**Residential Neighborhood: Skykomish River Basin Ag-10 Land**

**Appraisal Date: January 1, 2009**



**Value Change Summary**

**Value Change Summary  
By Abstract Group**

<b>Property Class</b>	<b>Number of Parcels</b>		<b>2008 Certified Total Value</b>	<b>2009 Calculated Total Value</b>	<b>Value Change</b>	<b>% Change</b>
Totals	620	L:	60,360,000	56,472,700	-3,887,300	-6.4%
		B:	53,456,400	45,187,100	-8,269,300	-15.5%
		T:	113,816,400	101,659,800	-12,156,600	-10.7%

- Agriculture: Farms General, Open Space Ag, Open Space General
- Industrial: Manufacturing Facilities
- Commercial: Retail, Schools and Churches
- Residential: Single Family Residences, Condominiums and Manufactured Homes
- Multifamily: All Multiple Family Parcels Including Duplexes and Tri-plexes
- Forest: Designated Forest Land and Open Space Timber
- Other: All Remaining Categories Including Vacant Land

**Snohomish County Assessor's Office**

**Mass Appraisal Report**

**Residential Neighborhood: Skykomish River Basin Ag-10 Land**

**Appraisal Date: January 1, 2009**



**Neighborhood Profile**

Neighborhood Profile By Property Class	Property Class / Use Code	Parcel Count	Sold Parcels	% Sold
	110-Sr Cit Exemption Residual	2		
	111-Single Family Residence	137	5	3.6%
	112-2 Single Family Residences	9		
	117-Manufac Home (Leased Site)	4		
	118-Manufac Home (Owned Site)	34		
	183-Non Residential Structure	10		
	186-Septic & Well	2		
	211-Meat Products	1	1	100.0%
	411-Railroad Transportation	6		
	456-Local Access Streets	2		
	481-Electric Utility	2		
	674-Correctional Institutions	1		
	745-Trails (Centennial, etal)	4		
	752-Group & Organized camps	1		
	769-Other Parks, NEC	1		
	816-Farms & Ranches	1		
	818-Farms General	2		
	819-Other Agricultural	1		
	830-Open Space Agriculture	247		
	849-Other Fishery Activities	1		
	850-Mine Claims Mineral Rights	6		
	880-DF Timber Acres Only	2		
	890-Other Resource Production	3		
	910-Undeveloped Land	127		

**Snohomish County Assessor's Office**

**Mass Appraisal Report**

**Residential Neighborhood: Skykomish River Basin Ag-10 Land**

**Appraisal Date: January 1, 2009**



**Neighborhood Profile**

<b>Neighborhood Profile By Property Class</b>	<b>Property Class / Use Code</b>	<b>Parcel Count</b>	<b>Sold Parcels</b>	<b>% Sold</b>
	916-Water Retention Area	1		
	931-Rivers,Streams,Creeks	1		
	933-Bays or Lagoons	1		
	940-Open Space General	11		
	<b>Grand Total</b>	<b>620</b>	<b>6</b>	<b>1.0%</b>

The first 2 digits of the property class code conform to the 2 digit land use code standards published in the Washington state department of revenue ratio procedures manual, April 1997.

**Snohomish County Assessor's Office**

**Mass Appraisal Report**

**Residential Neighborhood: Skykomish River Basin Ag-10 Land**

**Appraisal Date: January 1, 2009**



**Neighborhood Profile**

<b>Neighborhood Profile By Land Type</b>	<b>Land Type</b>	<b>Parcel Count</b>	<b>Sold Parcels</b>	<b>% Sold</b>
	23 Open Space General	7		
	24 Open Space Ag	147		
	54 No Perk	1		
	65 Topo Problems I	55		
	AG AG-10 FHZ	132		
	LF Land detail not used	2		
	N/A Building only	10		
	O1 Poor Location	2		
	O2 Fair Location	37		
	O3 Avg Location	168	4	2.4%
	O4 Good Location	35	2	5.7%
	UD Undevelopable Land	24		
	<b>Grand Total</b>	<b>620</b>	<b>6</b>	<b>1.0%</b>

N/A: Building Only Accounts (Parcels With No Land)

## Snohomish County Assessor's Office

### Mass Appraisal Report

Residential Neighborhood: Skykomish River Basin Ag-10 Land

Appraisal Date: January 1, 2009



### Neighborhood Profile

Neighborhood Profile By House Type	House Type / Stories	Parcel Count	Sold Parcels	% Sold
	11 - 1 Story	89	1	1.1%
	12 - 1 Story Bsmt	17	1	5.9%
	14 - 1 1/2 Story	38	1	2.6%
	15 - 1 1/2 Story Bsmt	21	1	4.8%
	17 - 2 Story	36	1	2.8%
	18 - 2 Story Bsmt	6		
	23 - Split Entry	6	1	16.7%
	24 - Tri Level	6		
	71 - DW Manuf. Home	28		
	74 - SW Manuf. Home	17		
	77 - TW Manuf. Home	1		
	N/A	355		
	<b>Grand Total</b>	<b>620</b>	<b>6</b>	<b>1.0%</b>

N/A: Land Only Accounts Or Non Single Family Structures

**Snohomish County Assessor's Office**

**Mass Appraisal Report**

**Residential Neighborhood: Skykomish River Basin Ag-10 Land**

**Appraisal Date: January 1, 2009**



**Neighborhood Profile**

<b>Neighborhood Profile By Structure Quality / Grade</b>	<b>Quality / Grade</b>	<b>Parcel Count</b>	<b>Sold Parcels</b>	<b>% Sold</b>
	25 Low	8		
	35 Fair	29		
	41 Avg Minus	5		
	45 Average	180	5	2.8%
	49 Avg Plus	22		
	55 Good	15		
	65 Very Good	6	1	16.7%
	N/A	355		
	<b>Grand Total</b>	<b>620</b>	<b>6</b>	<b>1.0%</b>

N/A: Land Only Accounts Or Miscellaneous Structures (Barns, Sheds, etc).

**Snohomish County Assessor's Office**

**Mass Appraisal Report**

**Residential Neighborhood: Skykomish River Basin Ag-10 Land**

**Appraisal Date: January 1, 2009**



**Neighborhood Profile**

<b>Neighborhood Profile By Year Built Range</b>	<b>Year Built Range</b>	<b>Parcel Count</b>	<b>Sold Parcels</b>	<b>% Sold</b>
				25.00 %
	1899 & older	4	1	
	1900 - 1909	15		
	1910 - 1919	26	1	3.85%
	1920 - 1929	22	1	4.55%
	1930 - 1939	11		
	1940 - 1949	14	1	7.14%
	1950 - 1959	19		
	1960 - 1969	38		
	1970 - 1979	42	1	2.38%
	1980 - 1989	26		
	1990 - 1999	31	1	3.23%
	2000 - 2009	17		
	N/A	355		
	<b>Grand Total</b>	<b>620</b>	<b>6</b>	<b>1.0%</b>

N/A: Land Only Accounts Or Non Single Family Structures

**Snohomish County Assessor's Office**

**Mass Appraisal Report**

**Residential Neighborhood: Skykomish River Basin Ag-10 Land**

**Appraisal Date: January 1, 2009**



**Neighborhood Profile**

<b>Neighborhood Profile By Total Living Area Range</b>	<b>Total Living Area Range</b>	<b>Parcel Count</b>	<b>Sold Parcels</b>	<b>% Sold</b>
	N/A	355		
	1 - 499	1		
	500 - 749	12	1	8.3%
	750 - 999	20	1	5.0%
	1000 - 1249	27		
	1250 - 1499	41		
	1500 - 1749	47	1	2.1%
	1750 - 1999	31		
	2000 - 2249	33	2	6.1%
	2250 - 2499	15		
	2500 - 2749	18		
	2750 - 2999	7		
	3000 - 3249	7	1	14.3%
	3250 - 3499	2		
	3500 - 3749	3		
	4250 - 4499	1		
	<b>Grand Total</b>	<b>620</b>	<b>6</b>	<b>1.0%</b>

N/A: Parcels Without Structures or Parcel With Structures Which Do Not Have Living Area

**Snohomish County Assessor's Office**

---

**Mass Appraisal Report**

**Residential Neighborhood: Skykomish River Basin Ag-10 Land**

**Appraisal Date: January 1, 2009**



**Performance Analysis**

---

**Performance Analysis**

**All Sales**

<b>Item</b>	<b>2008</b>	<b>2009</b>
Total Assessed Value	2,295,400	2,388,000
Total Sales Price	2,810,950	2,810,950
Average Assessed Value	382,567	398,000
Average Sales Price	468,492	468,492
Number in Sample	6	6
Median Ratio	0.7798	0.8452
Mean (Average) Ratio	0.8425	0.8511
Weighted Mean (S.W.A.) Ratio	0.8166	0.8495
Regression Index (P.R.D.)	1.0317	1.0018
Coefficient of Dispersion (C.O.D.)	0.1885	0.0186

**Snohomish County Assessor's Office**

**Mass Appraisal Report**

**Residential Neighborhood: Skykomish River Basin Ag-10 Land**

**Appraisal Date: January 1, 2009**

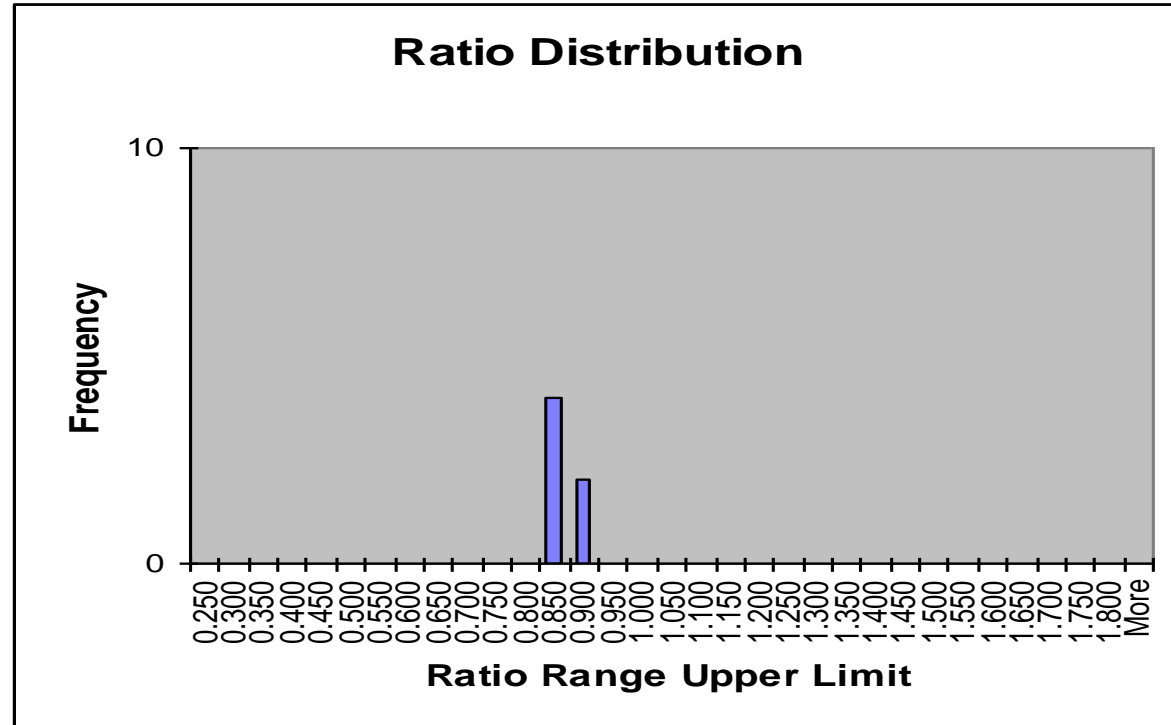


**Performance Analysis**

**Ratio Distribution Histogram**

All Use Codes

Sales Dated 2008



Each 'tic' on the 'X' axis represents the upper limit of the ratio range. For example, The bar associated with position 1.00 represents all of the parcels whose ratio is greater than 0.95 and less than or equal to 1.00

**Snohomish County Assessor's Office**

**Mass Appraisal Report**

**Residential Neighborhood: Skykomish River Basin Ag-10 Land**

**Appraisal Date: January 1, 2009**



**Performance Analysis**

**Performance Analysis**

**Use Code 111**

<b>Item</b>	<b>2008</b>	<b>2009</b>
Total Assessed Value	1,991,800	1,970,400
Total Sales Price	2,310,950	2,310,950
Average Assessed Value	398,360	394,080
Average Sales Price	462,190	462,190
Number in Sample	5	5
Median Ratio	0.8025	0.8460
Mean (Average) Ratio	0.8895	0.8543
Weighted Mean (S.W.A.) Ratio	0.8619	0.8526
Regression Index (P.R.D.)	1.0321	1.0019
Coefficient of Dispersion	0.1711	0.0198

**Snohomish County Assessor's Office**

**Mass Appraisal Report**

**Residential Neighborhood: Skykomish River Basin Ag-10 Land**

**Appraisal Date: January 1, 2009**

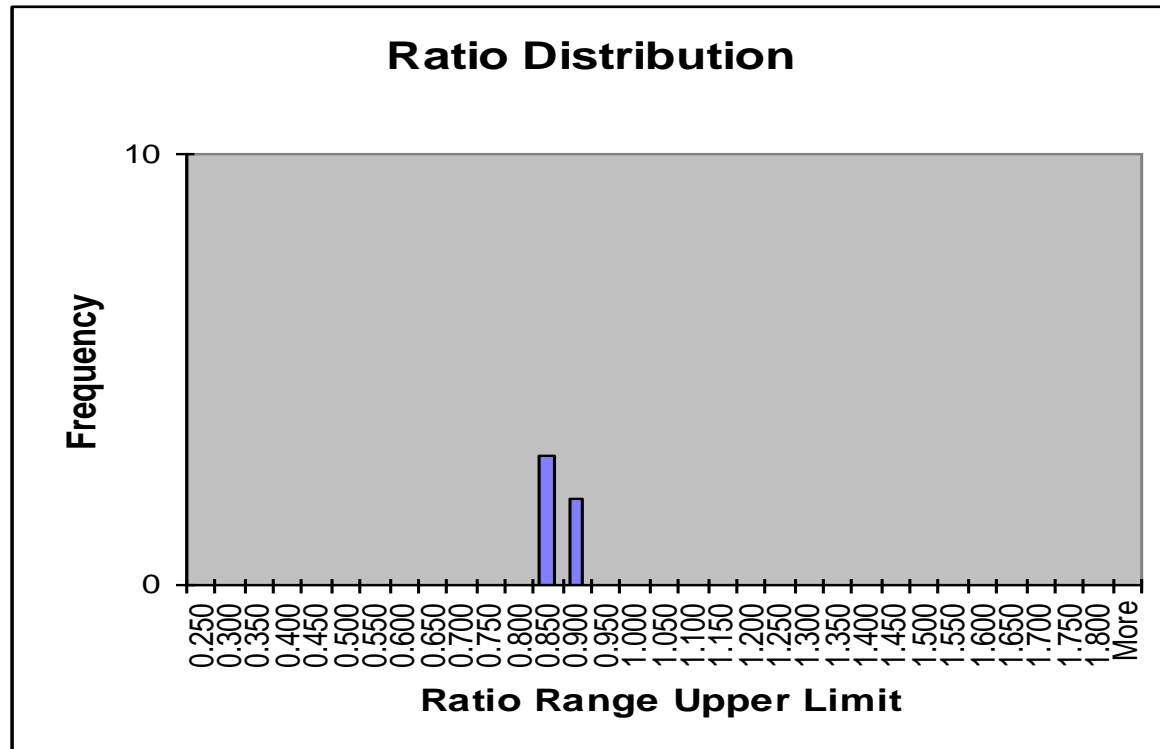


**Performance Analysis**

**Ratio Distribution Histogram**

**Use Code 111**

**Sales Dated 2008**



Each 'tic' on the 'X' axis represents the upper limit of the ratio range. For example, The bar associated with position 1.00 represents all of the parcels whose ratio is greater than 0.95 and less than or equal to 1.00

**Snohomish County Assessor's Office**

**Mass Appraisal Report**

**Residential Neighborhood: Skykomish River Basin Ag-10 Land**

**Appraisal Date: January 1, 2009**



**Qualified Sales**

<b>Parcel Number</b>	<b>Use Code</b>	<b>Land Type</b>	<b>Year Built</b>	<b>Style</b>	<b>Grade</b>	<b>Total Living Area</b>	<b>Total Value</b>	<b>Sale Date</b>	<b>V/I</b>	<b>Sales Price</b>	<b>Post Reval Ratio</b>
27070400400400	111	O3	1890	14 - 1 1/2 Story	45 Average	2,230	359,600	8/5/2008	I	399,950	0.90
27061100400400	111	O4	1975	23 - Split Entry	45 Average	1,640	299,400	1/24/2008	I	350,000	0.86
27070100302100	111	O4	1993	17 - 2 Story	65 Very Good	3,079	784,500	8/5/2008	I	929,000	0.84
27080600400300	111	O3	1940	15 - 1 1/2 Story Bsmt	45 Average	2,129	326,400	2/21/2008	I	395,000	0.83
27070700200800	211	O3	1924	11 - 1 Story	45 Average	968	417,600	11/24/2008	I	500,000	0.84
27061300100300	111	O3	1916	12 - 1 Story Bsmt	45 Average	576	200,500	3/25/2008	I	237,000	0.85
27070400400400	111	O3	1890	14 - 1 1/2 Story	45 Average	2,230	359,600	8/5/2008	I	399,950	0.90

**Snohomish County Assessor's Office**



**Mass Appraisal Report**

**Residential Neighborhood: Skykomish River Basin Ag-10 Land**

**Appraisal Date: January 1, 2009**

**Sales Not Included in  
Statistical Analysis**

The following sales were not included in the statistical analysis of this report for one of the following reasons:

- The 2008 assessed value did not include improvement value but the sale price included improvements (i.e. new construction that has not been assessed yet for the 2009 assessment).
- The improvements were assessed as less than 100% complete as of July 31, 2008 but the sale price was for a 100% complete home.
- A single family residence or manufactured home that was included in the sale price was torn down or moved after the sale and the 2009 assessed value does not include any improvement value.
- The sales price was less than \$1000.
- The ratio of the 2009 assessed value to the sale price was outside the Department of Revenue Ratio Study guidelines of greater than .25 and less than 1.75.
- The parcel was not in existence for the 2008 assessment and cannot be used for the year-to-year statistical comparison.

<b>Parcel Number</b>	<b>Use Code</b>	<b>Land Type</b>	<b>Year Built</b>	<b>Style</b>	<b>Grade</b>	<b>Total Living Area</b>	<b>Total Value</b>	<b>Sale Date</b>	<b>V/I</b>	<b>Sales Price</b>	<b>Post Reval Ratio</b>
No Sales											